

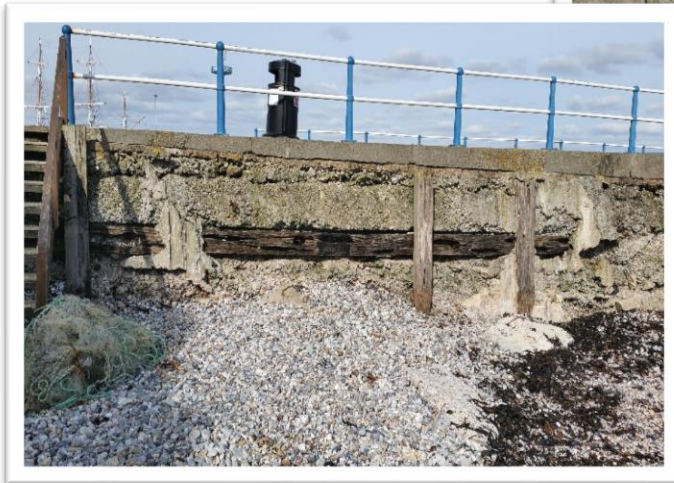
# Project Profile: Weymouth Harbour

**Project:** Weymouth Pier, Southern Facing Seawall Repairs

**Client:** Weymouth & Portland Borough Council

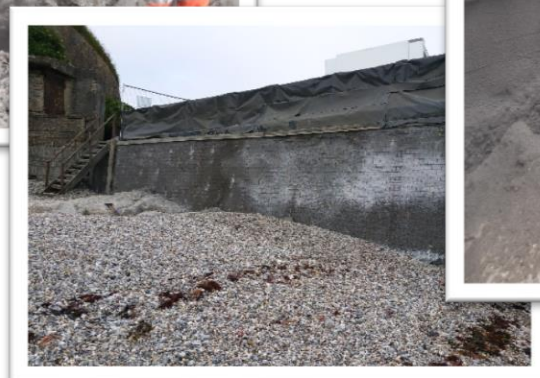
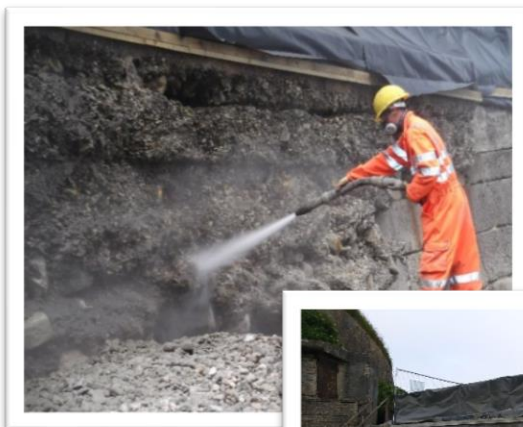


**The project:** Weymouth Stone Pier marks the Southern entrance to Weymouth Harbour, extending from the base of the Nothe Fort and constructed of a variety of materials which had been added to and repaired many times over the years. The pier was generally in good condition, but the southern face of the structure is subject to south easterly and easterly wave conditions and showed signs of weathering and deterioration, as a result requiring maintenance works to the root of its vertical surface.



**APA Concrete Repairs Ltd** were therefore appointed to carry out the necessary concrete repairs to the Southern arm of Weymouth Pier.

**The solution:** The surface of this Southern faced seawall was first prepared by the removal of the timber fenders along with any redundant metal fixings, followed by the removal of any loose fill material using mechanical breakers and a process of high-pressed water jetting. Once a suitable key for repair was created, deep pockets within the wall were reinstated back to the original profiles prior to fixing two layers of steel wrapping mesh to the wall. A sprayed concrete layer was then applied at a minimum of 200mm thickness, complete with a blockwork patterned finish being applied by **APA** skilled operatives to match the existing blockwork to the adjacent wall.



**The outcome:** Being the most efficient method of concrete application, the process of spray concreting the Southern face sea wall was completed in August 2016, ensuring this ever-popular destination could be promptly re opened to the public. The materials used for the completion of the repairs were of the highest quality and provided by Weber Saint-Gobain UK, with the product creating minimal rebound on application, meaning containment, collection and clean up works were largely eliminated, and any chance of sea pollution was avoided.



**Materials Utilised:**

- Webercem DS

**For further enquires please contact:**

E-mail: [sales@apaconcreterepairs.co.uk](mailto:sales@apaconcreterepairs.co.uk)  
 Tel: 01422 379640

**Northern Office**

Black Brook Way  
 Greetland  
 Halifax  
 West Yorkshire  
 HX4 8ED  
 Telephone: 01422 379 640  
 Fax: 01422 374 938

**Southern Office**

Abbey House  
 Wellington Way  
 Brooklands Business Park  
 Weybridge  
 London  
 KT13 0TT  
 Telephone: 0208 853 0627

E-mail: [info@apaconcreterepairs.co.uk](mailto:info@apaconcreterepairs.co.uk)

Web: [www.apaconcreterepairs.co.uk](http://www.apaconcreterepairs.co.uk)

PROFESSIONAL MEMBERSHIPS & ACCREDITATIONS HELD

